

LAS VEGAS TRIP

(name)

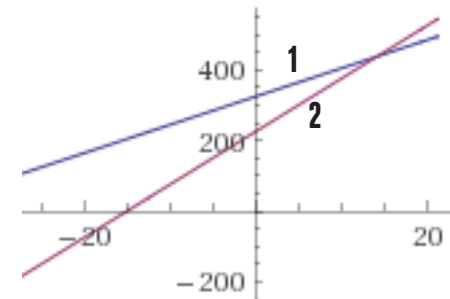
Below are screenshots from when I used WolframAlpha to graph the equations we created for the cost of traveling from Forestville to Las Vegas using the Santa Rosa Airport (SRS) and the San Francisco Airport (SFO)

1. Explain which line the represents the cost of choosing SFO, and which represents the cost of choosing SRS.

Input:

$$\{y = 8x + 324, y = 15x + 225\}$$

2. Label the x and y axis of the graph.
3. Explain the significance of the point where the two graphs intersect.



Solution:

$$x \approx 14.143, \quad y \approx 437.14$$

4. Is there anything about the graph that should be changed? Keep in mind that WolframAlpha was just graphing the equations without considering the real-world context.