

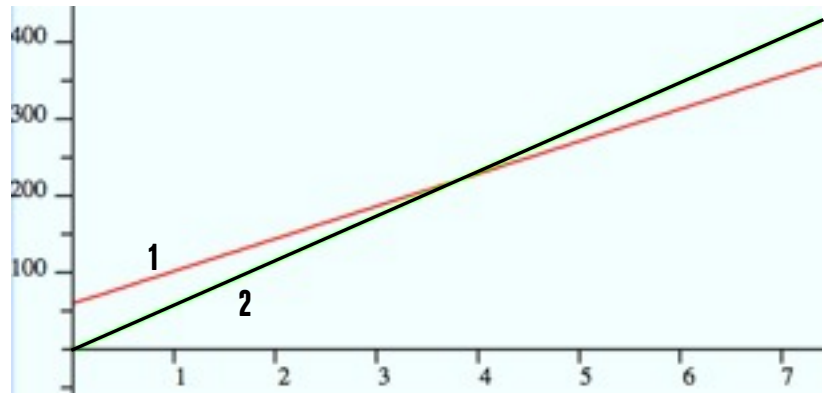
THE INTERNETS

Internet provider A charges \$60 for installation and \$42.25 per month. Internet provider B charges \$57.95 per month.

a) If you planning on keeping your internet service for at least a year, which company should you use? Explain.

I wrote equations for the total cost of each internet provider. Then I graphed both equations and labeled them 1 and 2.

b) Which line represents the cost of using provider A? Explain.



c) Write an equation for the total cost of using internet provider A, and an equation for the total cost of using internet provider B.

d) After how many months will the cost of the two internet providers be the same? Show calculations or explain. Calculations required for full credit.